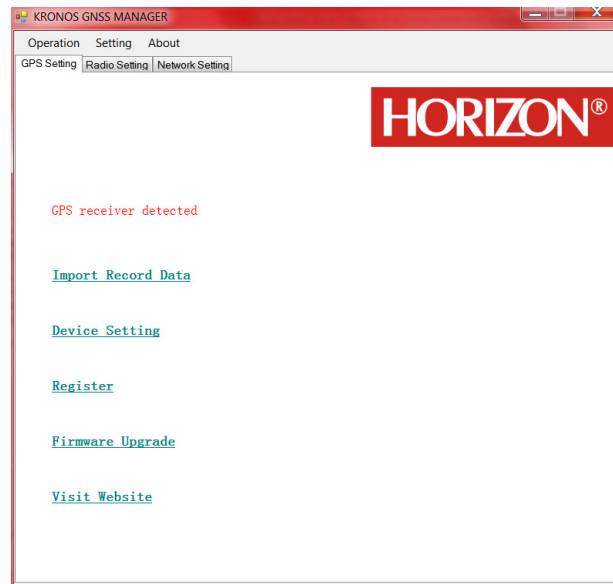
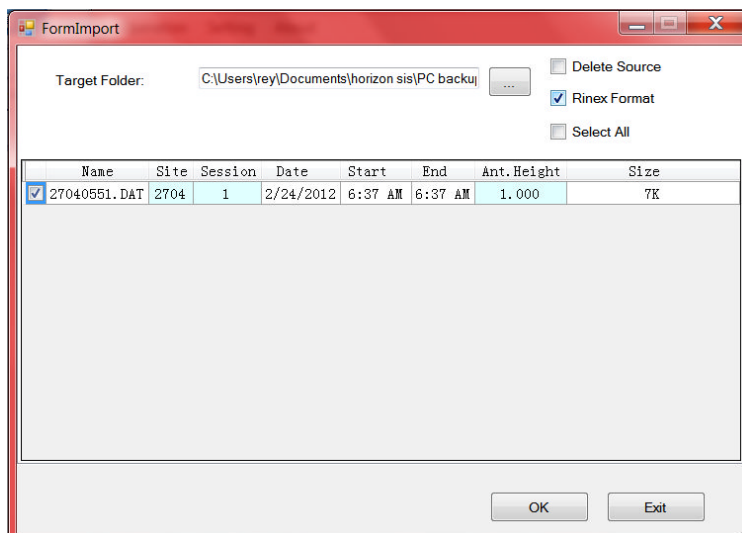


1. Connect Kronos with 9 PIN to 9 PIN/USB (L997Y-00-01 cable). The USB port is for the PC/Laptop. Don't power on the receiver.
2. Open Kronos GNSS MANAGER
3. Plug the USB to PC/Laptop. Check if the GNSS MANAGER says " GPS RECEIVER DETECTED FROM USB" if it says " NO GPS RECEIVER DETECTED FROM USB" try the following options:
 - a. Check 9 pin connection to Kronos
 - b. Check USB port connection
 - c. Try to transfer the USB port



4. Input the REQUIRED data (very important)
 - a. SITE ID
 - b. ANT. HEIGHT
 - c. Specify where to save your data.



Note. Double check if the data you have entered were correct.

5. Closed GNSS manager.